

#### FEATURES:

- Maximum Protection for EMP and TEMPEST Applications
- Low Power Dissipation
- Compact, Rugged Construction
- Current Range 16 to 200 Amperes
- Suitable for 400 Hz Supplies
- 100 dB Insertion Loss from 14 kHz to 40 GHz



*N600X Series Power Filters*

**THE N600X POWER FILTERS** are very high performance filters with low power dissipation for EMC, TEMPEST and government secure applications. For maximum performance, these filter networks are RF sealed in high quality electro-tin plated steel cases.

#### DESCRIPTION

The N600X generation of filters includes a reduction in power dissipation, size and leakage current over previous designs. The range includes the use of discrete line inductor technology which greatly enhances the performance for pulse handling applications in EMP protection.

The load current should return through the filter to maintain maximum performance.

Solid and permanent earthing of the case is essential for safety reasons and to ensure optimum performance.

All filters in this range are sensitive to orientation and must be installed correctly.

ETS-Lindgren filters are ROHS Compliant and are CE marked for Compliance with the low voltage directive.

#### FEATURES

##### Maximum Protection

The N600X series of power filters offer maximum protection for both EMP and TEMPEST applications.

##### Low Power Dissipation

These power filters offer very low power dissipation and low temperature rise of only 20% at full load.

##### Compact and Durable

These compact filters are made from durable materials to ensure reliable performance.

##### Current Range

All N600X filters offers current ranges from 16 to 200 Amperes. Available in Single Phase +N and Three Phase + N.

##### For 400 Hz Supplies

All N600X filters are suitable for 400 Hz supplies at 110 VAC when in operation.

##### Insertion Loss

This range of power filters affords insertion loss in excess of 100 dB from as low as 14 kHz for both off load and on load conditions.

#### APPLICATIONS

- In high performance screened rooms and anechoic chambers the N600X series provides protection of both incoming and outgoing supplies in line with the shield performance.
- In TEMPEST applications, the N600X filters provide an extremely high degree of protection required to obtain maximum security.
- N600X filters are ideal for EMP applications needing to meet the most stringent NATO requirements.
- N600X filters can be used for filtering of mains incomers entering screened room facilities.

#### STANDARD CONFIGURATION

- Supplied with End Housings
- Dedicated Neutral

#### OPTIONS

- TS (Transient Suppressor)
- HVTS (High Voltage Transient Suppressor)
- Other Options Available upon Request

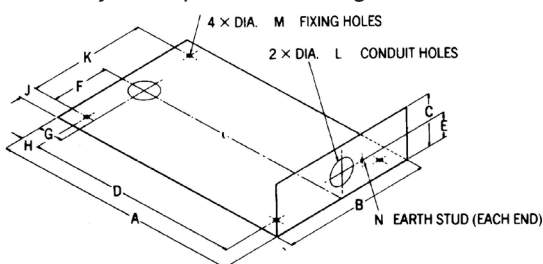
**Electrical Specifications**

PART #	Current Max (Amps)	Voltage Max (Volts)	Frequency (Hz)	Number of Lines	Volt Drop on Full Load in a 250V 50/60 Hz System Per Line (Max)	Full Load Dissipation (W)	Case Temperature Rise on Full Load (° C)	Max. Recommended Case Temperature on Full Load (° C)	Filters Fitted with 250V Transient Suppressors	Filters Fitted 400V Transient Suppressors
6000	16	250	DC/50/60/400	2	1.2	35	20	70	TS	HVTS
6001	16	440/250	DC/50/60/400	4	1	45	20	70	TS	HVTS
6002	32	250	DC/50/60/400	2	1.1	70	20	70	TS	HVTS
6003	32	440/250	DC/50/60/400	4	0.75	50	20	70	TS	HVTS
6004	63	250	DC/50/60/400	2	1.3	68	20	70	TS	HVTS
6005	63	440/250	DC/50/60/400	4	0.75	155	20	70	TS	HVTS
6006	100	250	DC/50/60/400	2	0.7	135	20	70	TS	HVTS
6007	100	440/250	DC/50/60/400	4	0.5	135	20	70	TS	HVTS
6009	200	440/250	DC/50/60/400	4	1	400	20	70	TS	HVTS

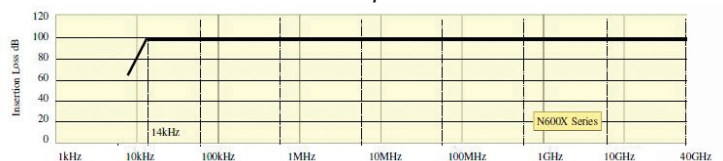
**Physical Specifications**

PART #	A	B	C	D	E	F	G	H	J	K	L	M	N	WEIGHT (kg)
6000	560 mm (22.0 in)	210 mm (8.4 in)	110 mm (4.3 in)	487 mm (19.2 in)	50 mm (2.0 in)	41 mm (1.6 in)	46 mm (1.8 in)	35 mm (1.4 in)	64 mm (2.5 in)	83 mm (3.3 in)	32 mm (1.3 in)	9 mm (.4 in)	M6	13.2 kg (29.1 lbs)
6001	560 mm (22.0 in)	415 mm (16.3 in)	110 mm (4.3 in)	487 mm (19.2 in)	50 mm (2.0 in)	143 mm (5.6 in)	46 mm (1.8 in)	35 mm (1.4 in)	64 mm (2.5 in)	286 mm (11.3 in)	32 mm (1.3 in)	9 mm (.4 in)	M6	17.7 kg (39.0 lbs)
6002	560 mm (22.0 in)	210 mm (8.4 in)	110 mm (4.3 in)	487 mm (19.2 in)	50 mm (2.0 in)	41 mm (1.6 in)	46 mm (1.8 in)	35 mm (1.4 in)	64 mm (2.5 in)	83 mm (3.3 in)	32 mm (1.3 in)	9 mm (.4 in)	M6	13.5 kg (29.8 lbs)
6003	560 mm (22.0 in)	415 mm (16.3 in)	110 mm (4.3 in)	487 mm (19.2 in)	50 mm (2.0 in)	143 mm (5.6 in)	46 mm (1.8 in)	35 mm (1.4 in)	64 mm (2.5 in)	286 mm (11.3 in)	32 mm (1.3 in)	9 mm (.4 in)	M6	20 kg (44.1 lbs)
6004	660 mm (26.0 in)	205 mm (8.1 in)	160 mm (6.3 in)	537 mm (21.1 in)	68 mm (2.7 in)	42 mm (1.7 in)	75 mm (3.0 in)	62 mm (2.4 in)	61 mm (2.4 in)	83 mm (3.3 in)	32 mm (1.3 in)	9 mm (.4 in)	M8	20.5 kg (45.2 lbs)
6005	660 mm (26.0 in)	410 mm (16.1 in)	165 mm (6.5 in)	537 mm (21.1 in)	68 mm (2.7 in)	143 mm (5.6 in)	75 mm (3.0 in)	62 mm (2.4 in)	62 mm (2.4 in)	286 mm (11.3 in)	50 mm (2.0 in)	9 mm (.4 in)	M8	31 kg (68.3 lbs)
6006	660 mm (26.0 in)	205 mm (8.1 in)	165 mm (6.5 in)	537 mm (21.1 in)	68 mm (2.7 in)	41 mm (1.6 in)	75 mm (3.0 in)	62 mm (2.4 in)	61 mm (2.4 in)	83 mm (3.3 in)	32 mm (1.3 in)	9 mm (.4 in)	M8	25 kg (55.0 lbs)
6007	660 mm (26.0 in)	410 mm (16.1 in)	165 mm (6.5 in)	537 mm (21.1 in)	68 mm (2.7 in)	143 mm (5.6 in)	75 mm (3.0 in)	62 mm (2.4 in)	62 mm (2.4 in)	286 mm (11.3 in)	50 mm (2.0 in)	9 mm (.4 in)	M8	31 kg (68.3 lbs)
6009	900 mm (35.4 in)	550 mm (21.7 in)	180 mm (7.1 in)	777 mm (30.6 in)	68 mm (2.7 in)	213 mm (8.4 in)	75 mm (3.0 in)	62 mm (2.4 in)	62 mm (2.4 in)	426 mm (16.8 in)	50 mm (2.0 in)	13 mm (.5 in)	M8	92 kg (202.8 lbs)

*N600X Physical Specification Diagram*



*N600X Series Performance Graph*



Phone + 1.512.531.6400 • info@ets-lindgren.com • www.ets-lindgren.com  
Offices in the US, Brazil, Finland, Germany, UK, France, India, Japan, Singapore, China, Taiwan