

Cable and line location – maximum **safety** and top **precision**



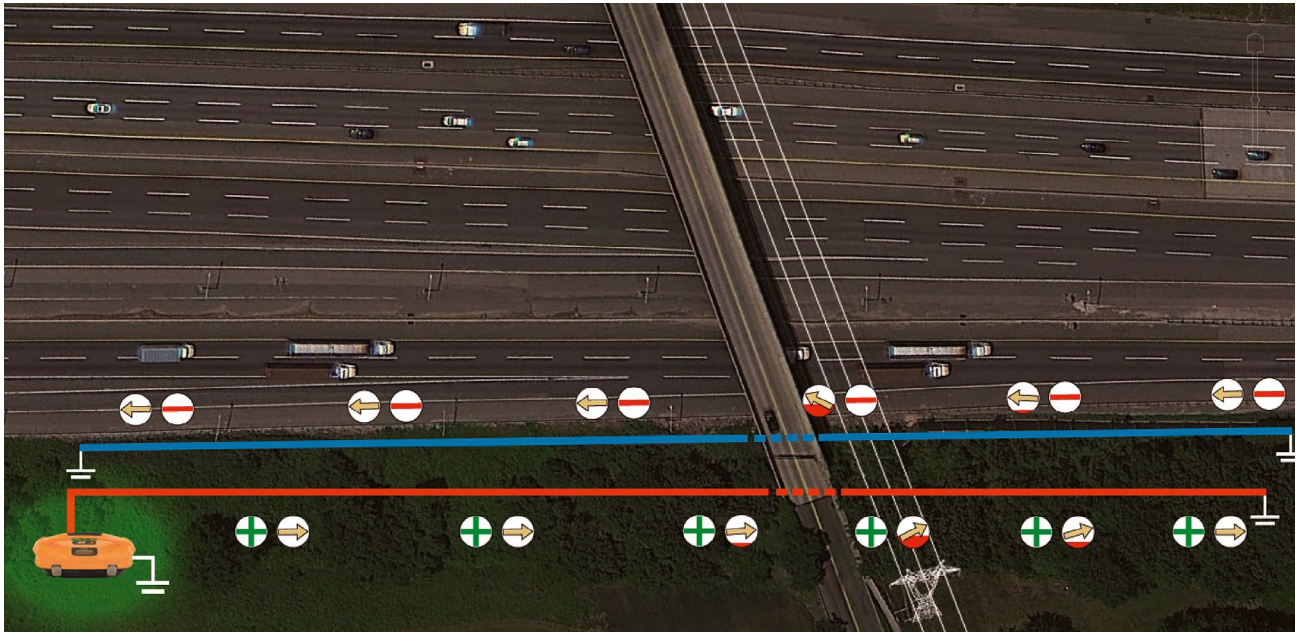
vLoc-5000

- Precise direction guidance with right/left arrows and cable guidance indicator
- SiS (Signal Select™) and SD (Signal Direction™) for reliable line identification
- Distortion Alert™ for signal evaluation
- Internal GPS receiver and data storage
- Permanent depth or signal current intensity measurement

vLoc-5000

Utility Locating System

Boost your confidence while locating and pin-pointing buried pipes and cables. SebaKMT introduces the vLoc-5000 with its state of the art algorithm to provide sophisticated and intuitive user interface. The information is fast and easy to understand, it makes the locate process easier and faster. The vLoc-5000 can store the locate information in its internal data logger and GPS. The receiver comes standard with a Lithium-Ion rechargeable battery pack which eliminates the need to constantly purchase batteries.



Accuracy

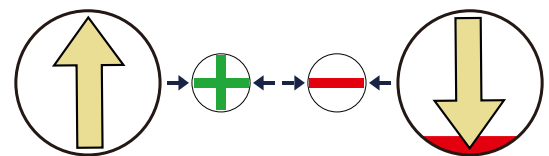
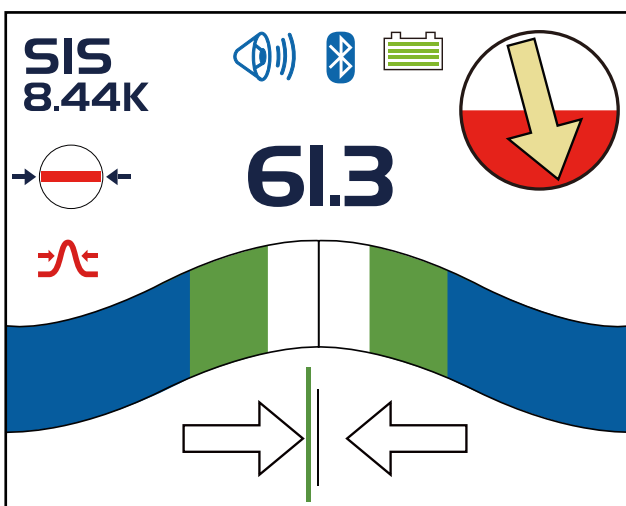
vLoc-5000 Receiver is intuitive and easy-to-use

The vLoc-5000 combines Signal Select™, Signal Direction™ and Distortion Alert™ in one locator. All information including GPS coordinates can be stored internally and retrieved later using MyLocator2.

The vLoc-5000 offers the Guidance Compass™ that combines features below to aid Positive Line ID.

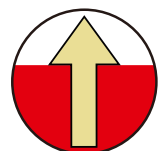
Signal Select™

Aids positive utility identification and aids in the notification of „ghost” signal's as return currents.



Distortion Alert™

Immediately warns operator of magnetic field distortion from hidden utilities.



Receiver and Transmitter

Powerfully Efficient Performance

Loc-10TxSIS combines Signal Select™ (SiS) and Signal Direction™ (SD) features to give you the best combination for positive identification. The transmitter measures line parameters in absolute physical units (volts, ohms, amps), to give critical Insights into the quality of a complete line circuit. Essential information is easily visible on the transmitter's display screen. Other enhancements include high capacity NiMH rechargeable battery technology that lowers operating costs.

- » Broad range of active frequencies between 16 Hz and 200 kHz are supported for direct mode locating
- » Up to 2 frequencies may be activated simultaneously to select the best signal frequency for the locate situation
- » Constant current, selectable in steps up to a maximum 1A
- » Multiple inductive frequencies from 8 kHz up to 200 kHz
- » Auto impedance matching optimizes the output efficiency
- » Optional A-frame mode for sheath fault locating.
- » Auto protection to 250 V AC against live power connection to the transmitter.

Features

- » Signal Select™ and Signal Direction offer
- » Positive Line ID
- » Distortion Alert™ assists in recognizing signal bleed-over
- » Peak Response, Null Response, L/R needle
- » Bluetooth® wireless communication enabled in receiver
- » Bright color graphical display
- » Broad frequency selection between 16 Hz and 200 kHz



Data Utilization

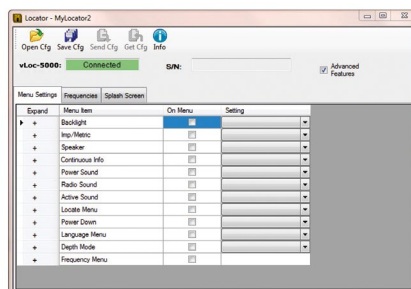
Improved Wireless Data Communication

With Bluetooth® wireless communication technology built-in, the receiver can pair with other Bluetooth-enabled devices for short-range communication.

Global Positioning System (GPS)

The internal GPS and data logging records a site location reference and combines it with all the other information available:

- » Date & Time
- » GPS coordinates
- » Frequency used
- » Depth & Current
- » Signal Select™
- » Signal Direction™
- » Distortion Alert™
- » Mode of operation



MyLocator2

MyLocator2 configuration tool is a software package that enables the operator to configure and update the vLoc-5000 locators. MyLocator2 is also used to transfer data logs from the locator to a host computer.

Accessories

Receiver Accessories

A-frame

For detecting the position of ground/sheath fault.



Charging Lead (12V DC)

12ft (4m) long lead to charge the receiver battery in a vehicle.



Signal Stethoscope

Used for cable SD and SiS identification.



GPS

Bluetooth is compatible with many other GPS units including high accuracy GPS.



Rechargeable Battery and Charger

Lithium-Ion rechargeable battery pack and charger



Transmitter Accessories

VM-Clamps

To apply the transmitter signal to a target cable when no access to the conductor is possible. Dia. (50mm), dia. (100mm), dia. (125mm), flexible (450mm), signal select clamp dia. (100mm)



LPC Separation Filter

To apply the transmitter signal to cables carrying up to 240 V AC.



Loc-10Tx - Power Lead (12V DC)

30ft (10m) lead to power the transmitter from a vehicle.



Rechargeable Battery Packs and Chargers

Loc-10Tx (10 watt transmitter) NiMH rechargeable battery packs and chargers

