

# Acute TravelLogic logic analyzer

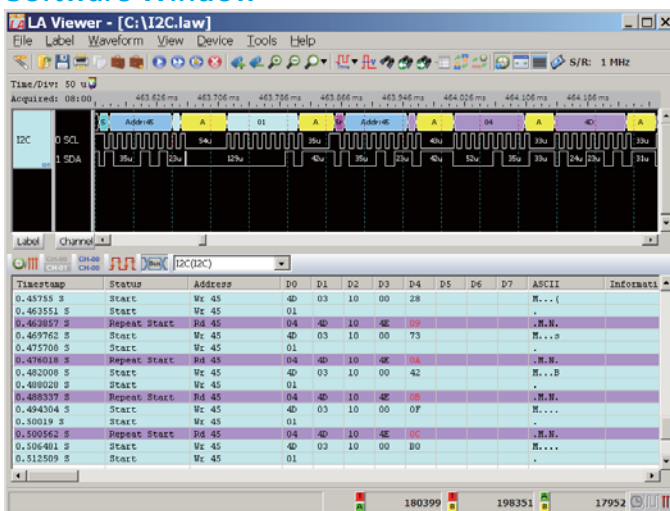
- PC-based
- USB2.0 interface / powered
- 18 channels
- 4 GHz timing
- 200 MHz state analysis
- 4-conditions (4 levels each) trigger
- Data Logger (HD storage)
- Transitional Storage / Qualified Storage
- Input Sensitivity 0.25Vpp
- Stackable with Acute or other brand DSO to form an MSO
- Bus Trigger : I<sup>2</sup>C
- Bus Decode : CAN, BiSS-C, eMMC5.0, I<sup>2</sup>C, I<sup>2</sup>S, Nand Flash, ProfiBus, SD, SPI, SVID, UART, USB1.1, ... (70+ decodes)



123 x 76 x 21 mm<sup>3</sup>

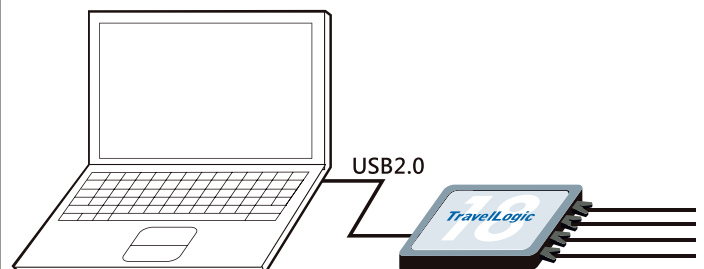
Model	Channels	Memory / CH	Total Memory
TL2118E	18 CH	1 Mb	18 Mb

## Software Window



## System Requirements

- USB 2.0 port
- XP, Vista, Win 7, Win 8 (32 / 64 bits)



# Acute

PC-based T&M Instruments

Acute Technology Inc.

Tel: 886-2-2999-3275 Fax: 886-2-2999-3276 E-mail: [service@acute.com.tw](mailto:service@acute.com.tw) <http://www.acute.com.tw>



## TravelLogic series

Model		TL2118E
Power	Power Source	USB bus-power (+5V)
	Static Power Dissipation	0.75W
	Max Power Dissipation	<2.5W
Hardware Interface		USB2.0
Timing Analysis (Synchronous, Max Sample Rate)		4 GHz
State Clock Rate (Asynchronous, External Clock)		200 MHz
Transitional Storage		Multi channel (55 bits at 5 ns resolution/5.7 years duration)
Qualified Storage		Only supports Transitional Storage
Channels (Signal/Ground)		18/2
Total Sample Memory		18M bits
Memory (bits) per channel vs. number of channels available	Timing Analysis	Memory (bits) per channel/number of channels available
	4 GHz	2.5K/18
	1.6 GHz	4M/4
	800 MHz	2M/9
	400 MHz	1M/18
		1M/18
	200 MHz	1.5M/12, 2M/9 3M/6, 4.5M/4 9M/2, 18M/1
Trigger	Resolution	250ps
	Channels	18
	Conditions	Yes (4)
	Levels for each Condition	Yes (16)
	Pre/Post Trigger Setting	Yes
	Pass Counter	Yes (0 ~ 1048575 times)
	Event Types	Word, Channel, Transition, Glitch, Width, Comparison, Time-out
	Bus Trigger	I <sup>2</sup> C
	Input Port (for Stack)	TTL 3.3V
	Output Port (for Stack)	TTL 3.3V
Threshold	Range	+6V ~ -6V
	Resolution	50mV
	Accuracy	±100mV + 5%*Vth
Input Voltage	Maximum	±40V DC, 15Vpp AC
	Sensitivity	0.25Vpp @50MHz, 0.5Vpp @150MHz, 0.8Vpp @250MHz
Impedance		200KΩ// <5pF
Temperature	Operating/Storage Temperature	5°C ~ 45°C (41°F ~ 113°F)/-10°C ~ 65°C (14°F ~ 149°F)
Channel to channel skew		< 1ns
Software Features	Zoom In/Out	Yes (Scroll the mouse wheel)
	Languages	English/Traditional Chinese/Simplified Chinese
	Waveform Height	Adjustable
	Zoom Window/Report Window	Yes
	Quick Cursor-positioning	Yes
	Import Label(s)	Yes
	Quick Bus Decode Setup	Yes
	Trigger cursor/Auxiliary cursors	1/25
	Data Logger	Saved to Hard Disk
	Bus Decode	1-Wire, 3-Wire, 7-Segment, A/D Mux Flash, AccMeter, ADC, APML, Biss-C, CAN, Close Caption, CEC, DALI, DMX512, DP-Aux, EDID, eSPI, FlexRay, Line Decoding, Line Encoding, HD Audio, HDQ, HID over I <sup>2</sup> C, I <sup>2</sup> C, I <sup>2</sup> C EEPROM, I <sup>2</sup> S, I80, IDE, ITU656, IrDA, JTAG, LCD1602, LIN, Lissajous, LPC, LPT, M-Bus, Math, MDIO, MHL-CBus, Microwire, MII, MIPI DSI, MIPI SPMI, MMC(eMMC5.0), Modbus, Nand Flash, NEC IR, PECL, PMBus, ProfiBus, PS/2, PWM, QI, RC-5, RC-6, SDIO(SD3.0), Serial Flash, Serial IRQ, SGPIO, Smart Card, SMBus, SMI, S/PDIF, SPI, SPI-NAND, SSI, ST7669, SWD, SWP, SVI2, SVID, UART, UNI/O, USB 1.1, Wiegand, ...
Line Decoding	Biphase Mark, Differential-Manchester, Manchester (Thomas, IEEE802.3), Miller, Modified Miller, NRZI, ...	
Line Encoding	AMI (Standard, B8ZS, HDB3), Biphase Mark, CMI, Differential-Manchester, Manchester (Thomas, IEEE802.3), MLT-3, Miller, Modified Miller, NRZI, Pseudoternary, ...	
Dimension	Length x Width x Height (mm <sup>3</sup> )	123 x 76 x 21 (mm <sup>3</sup> )
Lead Cable		A 40-pin lead cable (36 Signal + 4 Ground)
Grippers		20



Acute Technology Inc.

PC-based T&M Instruments Tel: 886-2-2999-3275 Fax: 886-2-2999-3276 E-mail: [service@acute.com.tw](mailto:service@acute.com.tw) <http://www.acute.com.tw>