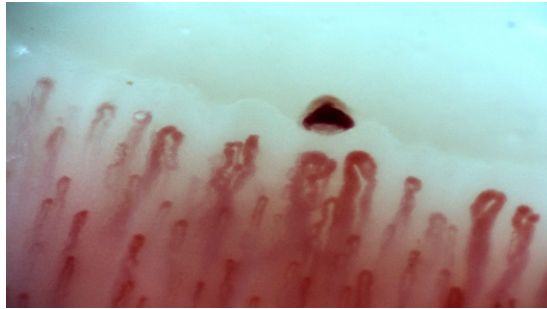




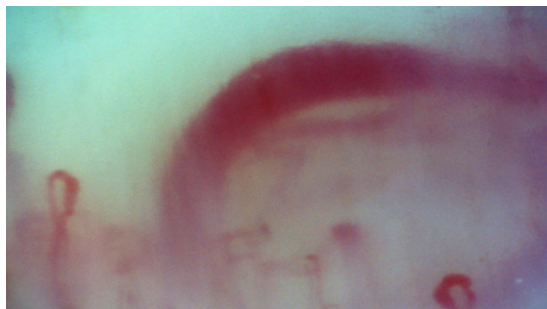
Normal Pattern



Early Scleroderma Pattern



Active Scleroderma Pattern



Late Scleroderma Pattern

Images courtesy of Florian Meier and Inspectis.

V3, 2026. We reserve the right to modify data and specifications without prior notice.



Quality of Inspection

Inspectis Optical Systems
Stockholm, Sweden
www.capillarscope.com
info@capillarscope.com

Capillarscope

Video Capillaroscopy for Analysis of Microcirculation



Capillaroscopy for Professionals

Developed by world's leading expert in Capillaroscopy
Microscopes and Systems!

Professional Solutions for all Levels of Expertise

Advanced

Intermediate

Elementary

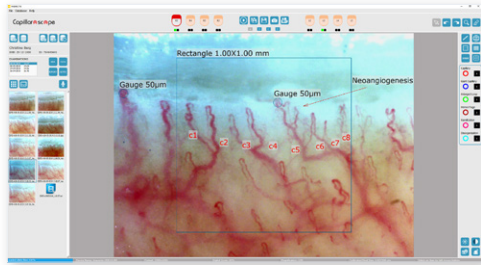
Capillaroscope Comprehensive capillaroscopy systems for all user levels

Hospital and Research
Tertiary Care and Research

Regional Clinic, Practice
Primary and Secondary Care

Small Clinics, Practice
Primary Care and Training

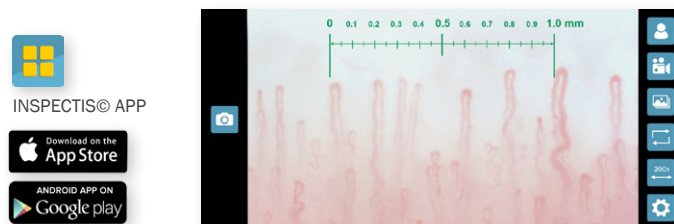
INSPECTIS© CAP Pro with advanced image analysis and measuring tools. Secure and adaptable database and case management features ability to perform follow-up and check-ups. Ability to produce medical reports under national and international standardized guidelines.



INSPECTIS© CAP Basics with image view, capture, measurement and counting tools. Ability to produce medical reports.



INSPECTIS© APP for Android and iOS with image view, capture and millimetre gauge overlay. Ability to edit and save patient name or ID together with the captured images or video.



Capillaroscope G2

CapiScope

DigiScope Wi-Fi



Image sensor	5.0MP active pixel	5.0MP UVC	1.2MP UVC
Available resolutions	5Mp, 3MP, 2.1MP, 0.3MP	5Mp, 3MP, 2.1MP, 0.3MP	2.1Mp, 0.92Mp
Recommended video format	2000x1500 @30 fps ,RGB24	2000x1500 @30 fps, MPEG	1920x1080 @30 fps, MPEG
Video aspect ratio	4:3, 16:9	4:3, 16:9	4:3, 16:9
Image snap by device	In PC software	In PC software	In APP
Device interface	USB3.1, 3.2 Gen1 (5Gbit/s)	USB2.0 (480Mbit/s)	USB2.0 (480Mbit/s), Wi-Fi
Connection type	USB-A type cable	USB-C and USB-A type	Wi-Fi, USB-A type cable
Primary device	Windows PC	Windows PC	Android/iOS phones & tablets
Alternative device	-	Android Smart phone & tablet	Windows PC
Recommended OS	Win10, Win11	Win10, Win11, Android	iPadOS, iOS, Android
Software	INSPECTIS© CAP Pro, Basics	INSPECTIS© CAP Pro, Basics, APP	INSPECTIS© APP, CAP Basics
Lens type	Interchangeable	Fixed	Fixed
Available magnifications	15-45x varifocal, 100x, 200x, 300x	200x and 300x	50x-200x twin focal
Lighting	Pure white LED with CapiDome	Pure white LED with CapiDome	Pure white LED with CapiDome
Certifications	CE, MD Class 1	CE	CE

Certified ISO 13485 Medical devices quality management systems

