

- Network

LAN(LOCAL AREA NETWORK) TRAINING SYSTEM

ED-NET-3

- Panel type structure for good grasp of entire network configuration
- Learning about the functions and characteristics of basic network equipments such as NIC, HUB, Router and DSU, plus installation and maintenance
- Interlocking experiments with Internet for clear understanding a real network
- Capable of connecting to the open network on campus



> EXPERIMENTS

- Understanding of communication theory / protocol
- LAN Card setup practice
- Field practices for wire arrangement among the LAN products
- Concept of HUB setup practice
- DSU function, Line Path characteristics and use of Interface
- Fuction of Router and interface setup
- Opration of the program for packet Analysis
- Network design and programming
- Interlocking functionality for ADSL Training System(ED-NET2 model)

> LEARNING OBJECTIVES

Covering experiment topics for a course of 8 weeks, each system set starts from basic theories and understanding of the essential equipments with real field installation, and ends with use of the installd network and identification of minitoring tasks. Each chapter of the Experimental Manual consists of theory(2 hours) and practice(2 hours)

> SPECIFICATIONS

• Router

- » One 10/100BaseTX Fast Ethernet port (RJ45)
- » One serial, async, and sync (T1/E1)
- » Synchronous serial interfaces on serial WAN interface cards
- » Asynchronous serial interfaces on serial WAN interface cards
- » ISDN WAN interface cards
- » One auxiliary (AUX) port
- » One console port
- » One internal expansion slot
- » Motorola MPC860T PowerQUICC at 48 MHz RISC Processor
- » 4MB DRAM
- » 4MB Flash memory
- » Full Cisco IOS support
- » Including multiprotocol routing (IP, IPX, AppleTalk, IBM/SNA)

• CSU

- » SYNC : 2400/4800/9600/19200/38400/56000/64000 bps
- » ASYNC : 2400/4800/9600/19200/38400/56000/57600/64000bps
- » EIA-232D(SYNC/ASYNC) : 2400~64000bps
- » ITU-T.V.35(SYNC/ASYNC) : 2400~64000bps
- » One Ethernet Port
- » DDS(Digital Data Service)
- » Self Test & Test (LLB, DLB, RDLB, TPG)
- » Remote DSU Control

• HUB

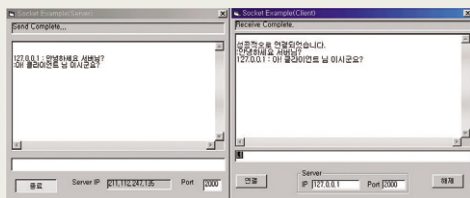
- » Conforms to IEEE802.3, 802.3u and 802.3x Ethernet Standards
- » 8 ports auto-negotiation 10/100Mbps Ethernet RJ-45 ports
- » Automatic MDI/MDIX crossover for each 10Base-T/100Base-TX port
- » Backpressure for Half-duplex mode and Flow control for Full-duplex mode
- » Store-and-forward switching architecture
- » 1K entry MAC address table and automatic address learning
- » Performs non-blocking full wire speed
- » LED-indicator for Power, LK/ACT

GENERAL CHARACTERISTICS

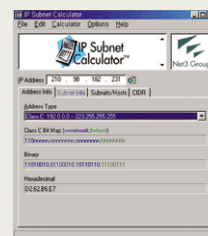
- Dimension 500(W) x 400(H) x 400(D)mm : 2sets
- Weight : 35kg
- Input Power : AC 220V, 50/60Hz

ACCESSORIES

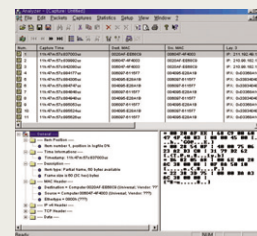
- LAN Card : 5ea
- UTP Line Tester : 1ea
- UTP Cable : 300m
- RJ-45 Jack : 100ea
- RJ-45 Tool : 1ea
- Manual : 1ea



Example of WINSOCK Program



Packet Analyzer Program



Calculator Subnet