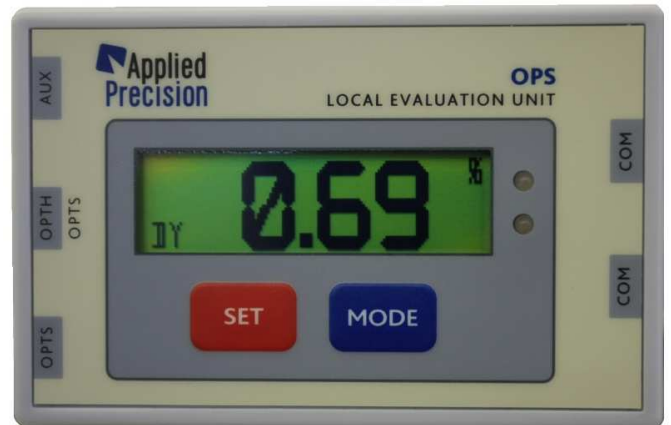


⇒ Highlights

- Remotely configurable either for reflexive mark or SO output of electromechanical or LED of electronic meters.
- The reflex scanner work with coded signal to suppress false light signals.
- The auto-calibration capability significantly increases the work comfort and productivity of the test system.
- The built-in remotely controlled dividers enable to evaluate high constant meters with light impulses up to 1 kHz.
- Variable pre-divider enables direct measurement of standard meters with impulse output up to 500 kHz.
- The built-in manual switch enables effective local control of individual unit and data input for tests with operator interactions.



⇒ Description

The **Local Evaluation Unit OPS** is a local microcomputer designed for comparison of reference impulses coming from the standard meter with optical impulses or reflexes from the black mark on the disk of the meter. Value of the measured error is displayed by the unit. The unit permits measurement of electromechanical as well as electronic meters. The built-in configuration possibilities enable to match variety of meter types and measurement requirements. Auto-calibration facility of the optical part of unit increases the work productivity eliminating necessity of manual sensitivity adjustment.



OPS 400 in Meter Handling System



OPS 500 in Meter Handling System

⇒ Available Models

Model	Description
OPS 400	Equipped with serial optical communication head for communication with electronic meters.
OPS 500	= OPS 400 + simultaneous reading of registers and parameterization of all tested meters

⇒ Technical Specification

General Parameters	
Max. Resolution	0.002 %
Interfaces	RS-422
Supply	9 V
Consumption	approx. 150 mA

Maximal Frequencies	
Impulses from the standard	500 kHz
Optical Input	1 kHz
S0 Input	1 kHz
Impulse Input	1 MHz (TTL, CMOS)

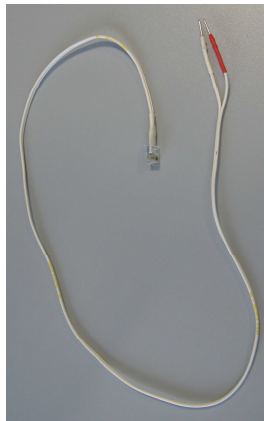
⇒ Options / Accessories

● ... standard / ○ ... optional

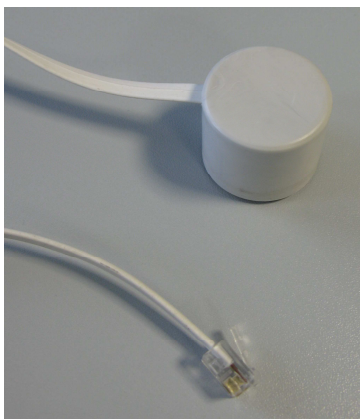
Code	Description	OPS 400	OPS 500
OPS 400-Body	Local Evaluation Unit body with display and keypad	●	●
OPTS 2100	Enhanced Optical Sensor for static and dynamic meters	●	●
OPTI 1000	Impulse (S0) cable for OPS unit	●	●
OPTH 1000	Optical Communication Head (IR and IrDA) with RJ connector	●	○
OPTH 2000	Optical Communication Head (IR) with USB connector	○	●
EDEX	Data Exchange HW and SW system including USB infrastructure	○	●
OPPS 1000	Positioning system for Optical Sensor	○	○
OPPS 2000	Positioning system for Optical Communication Head	○	○



OPTS 2100



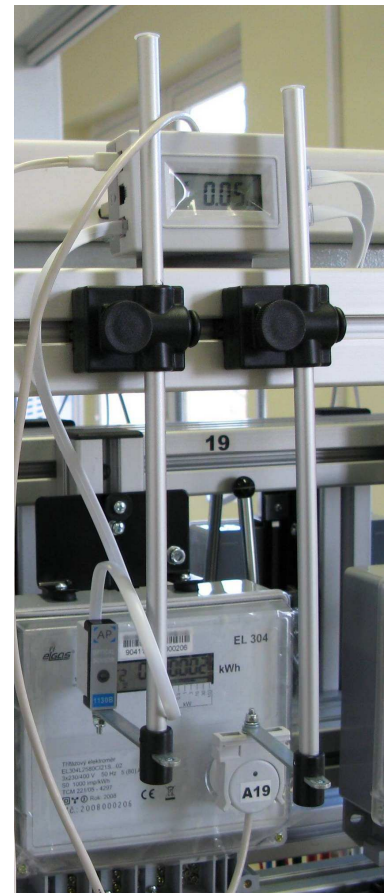
OPTI 1000



OPTH 1000



OPTH 2000



OPPS 1000 (left) and OPSS 2000 (right)